

Technical Data Sheet



Catalog No. P60SF21-7.5

Characteristics

Phase	1
KVA	7.5
Primary	600V
Secondary	120/240v
Conductor	Aluminum
Temp. Rise	115° C
Frequency	60 HZ
Taps	-2@5%
ESS	Yes
Insulation	180° C
Weathershield	N/A
Wall Bracket	Built-In
Weight(lbs)	150
Sound(dB)	40

Notes

All units are UL listed and are designed in accordance with applicable NEMA, ANSI and IEEE standards.

Transformers are dry-type AA, non-ventilated NEMA 3R enclosure.

Transformers are wall mounted. Wall mounting bracket is built into the enclosure.

Paint color is ANSI 61.

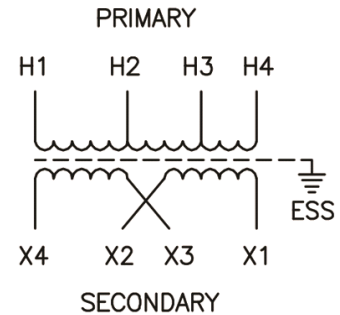
AMP Ratings

Line In (Primary) @ 600V 12.5A

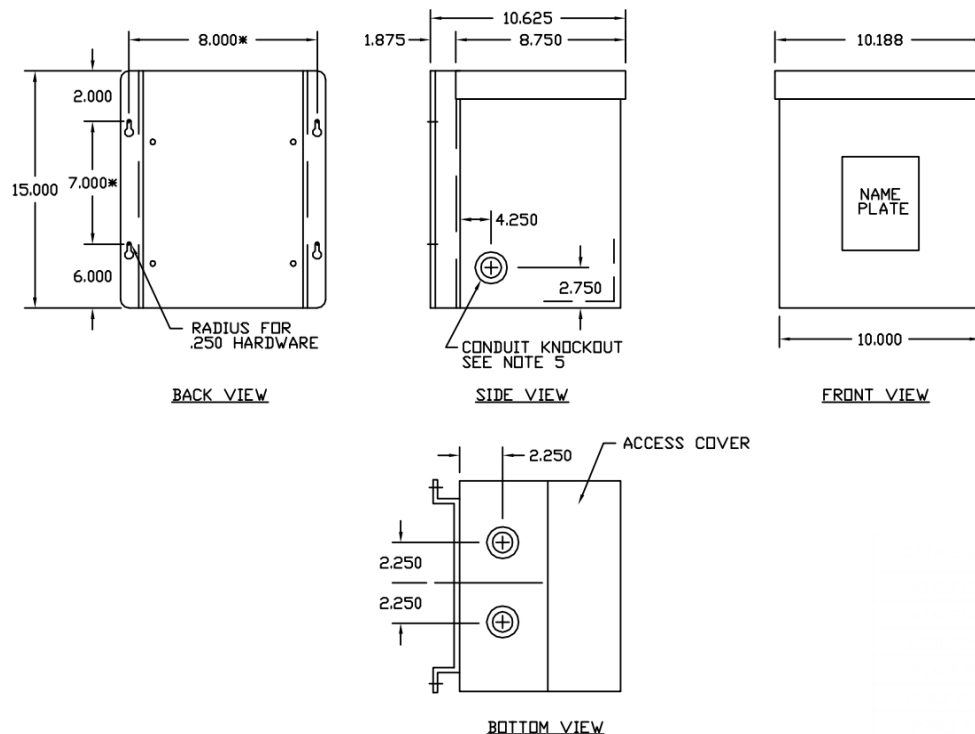
Load (Secondary) @ 120V 62.5A

Load (Secondary) @ 240v 31.3A

Wiring Diagram - 3



VOLTS	CONNECTIONS	LINE LEADS
600		H1,H4
570		H1,H3
540		H1,H2
240	X2-X3	X1, X4
240/120	X2-X3	X1, X2, X4
120	X1-X3, X2-X4	X1, X4



Outline No: 05A1465